

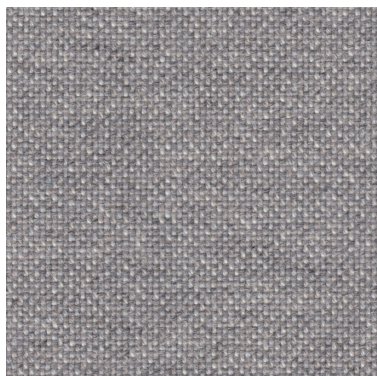


Product code: 5535

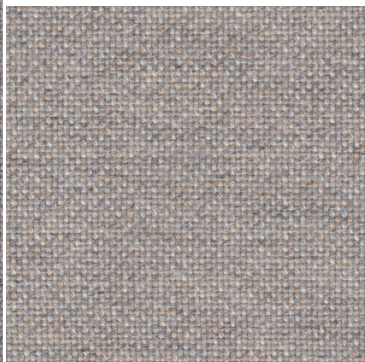
Redal

Design: GU Design Team / Ragnhild Nordhagen & Christiane Müller

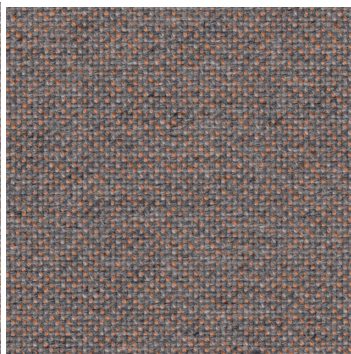
Fargepalett



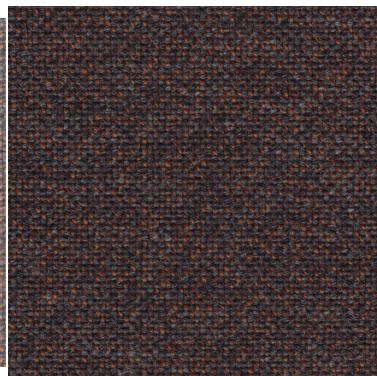
130 Dawn Mist



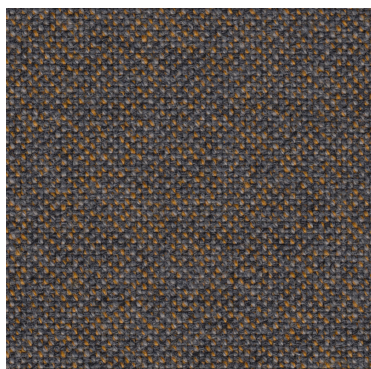
320 Soft Sand



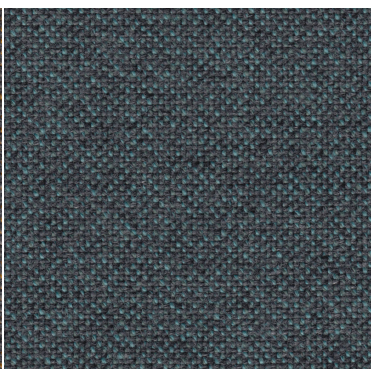
540 Soft Clay



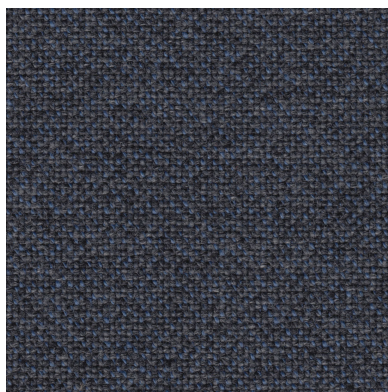
185 Earthy Red



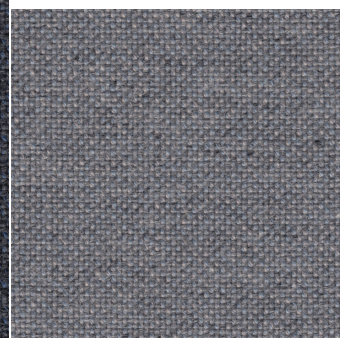
480 Ochre Yellow



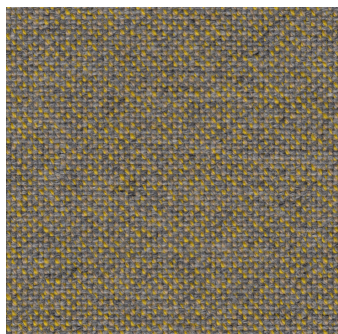
860 Brilliant Fjord



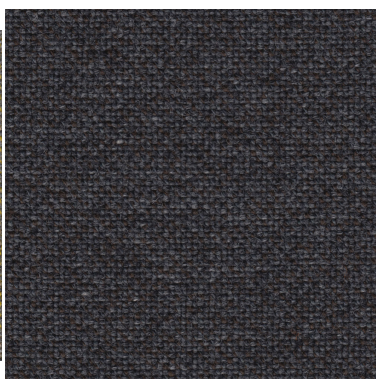
780 Thunder Storm



150 Stone Blue



440 Sunny Field



190 Mountain Pass

Specifications

Flame Resistance	System.String[]
Designer	GU Design Team / Ragnhild Nordhagen & Christiane Müller
Customs code	NO 51.11.3000
Material	70% Virgin Wool / 30% Viscose
Weight (g/m)	800
Width (cm)	140
Durability (rubs on Martindale)	110000
Fastness to light (Scale 1-8)	5-7
Resistance to rubbing dry state (Scale 1-5)	4
Resistance to rubbing wet state (Scale 1-5)	3-4

Flame Resistance	EN 1021: Part 1 and 2 (cigarette and match) FTP Code: Part 8 (IMO A652 (16)) BS 5852: Clause 11 - source 5 (crib 5)
Cleaning	Dry cleaning or cleaning with foam detergents
Wheel Mark	Yes
EU-flower	Yes