

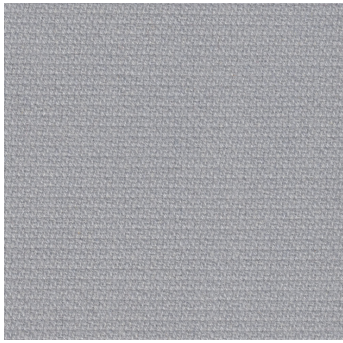


Product code: 5096

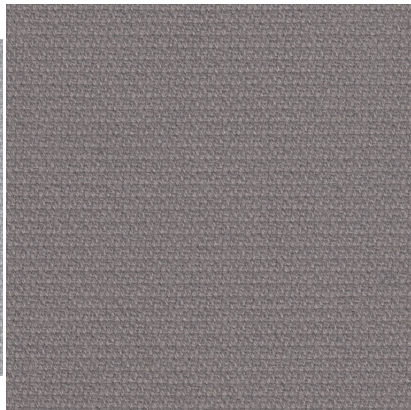
Sirdal

GU Design Team / Ragnhild Nordhagen / Flokk Design Team / Pernille Jensen Stoltze

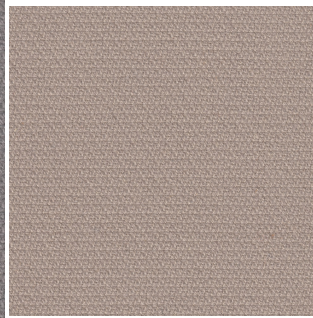
Swatches



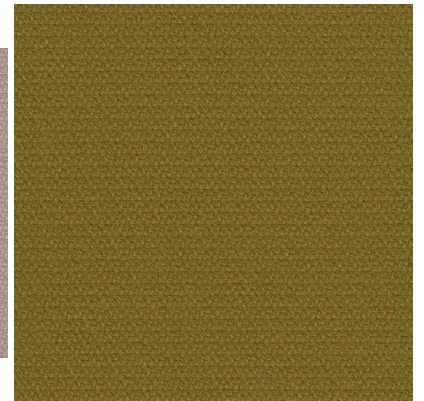
120 Skyline



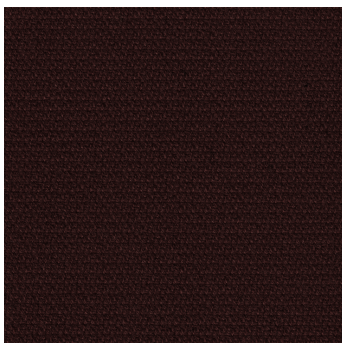
216 Ulriken View



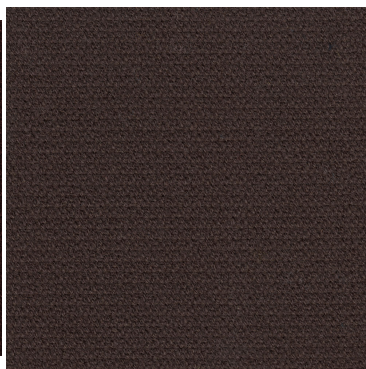
210 Goat



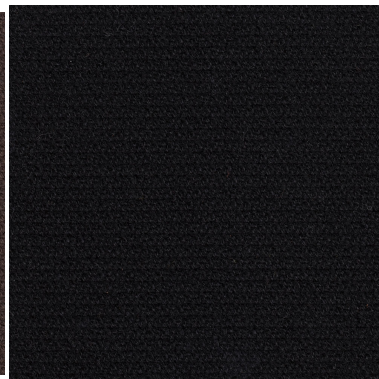
940 Lilyhammer



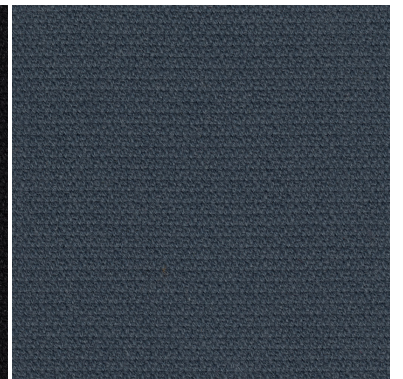
480 Chestnut



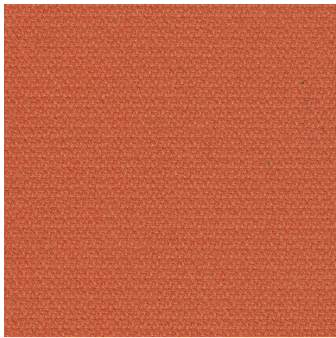
450 Shiny Pony



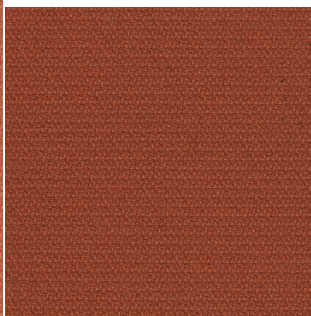
190 Black Sheep



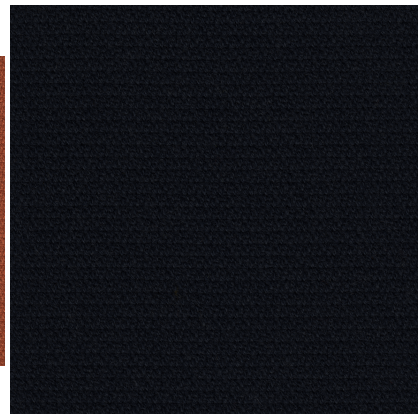
765 Bergen Rain



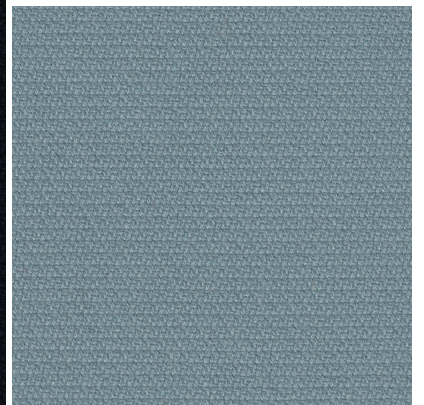
540 Sunset



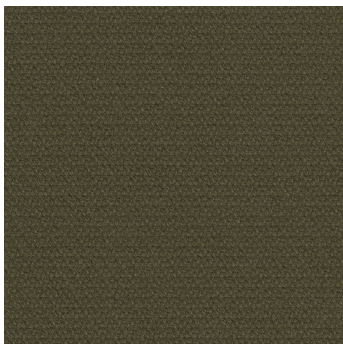
630 Brick



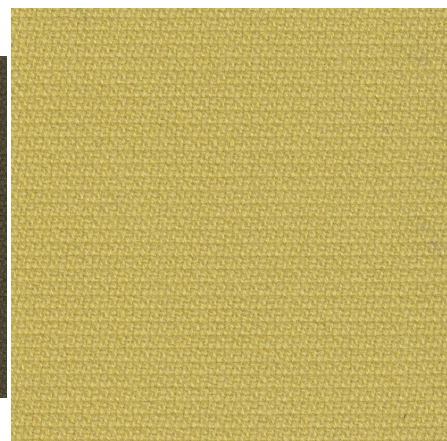
780 Evening Blue



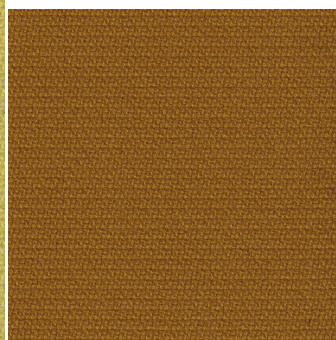
730 Scandinavia



960 Moss



910 Autumn Leaf



320 Oker

Specifications

Flame Resistance	System.String[]
Designer	GU Design Team / Ragnhild Nordhagen / Flokk AS Design Team / Pernille Jensen Stoltze
Customs code	NO 51.11.1900
Material	100% Virgin Norwegian Wool
Weight (g/m)	800
Width (cm)	133
Durability (rubs on Martindale)	58000
Fastness to light (Scale 1-8)	5-7
Resistance to rubbing dry state (Scale 1-5)	4
Resistance to rubbing wet state (Scale 1-5)	3-4
Flame Resistance	FTP Code: Part 8 (IMO A652 (16)) EN ISO 1021: Part 1 and 2
Cleaning	Dry cleaning (P)
Wheel Mark	Yes