



Product code: 5042

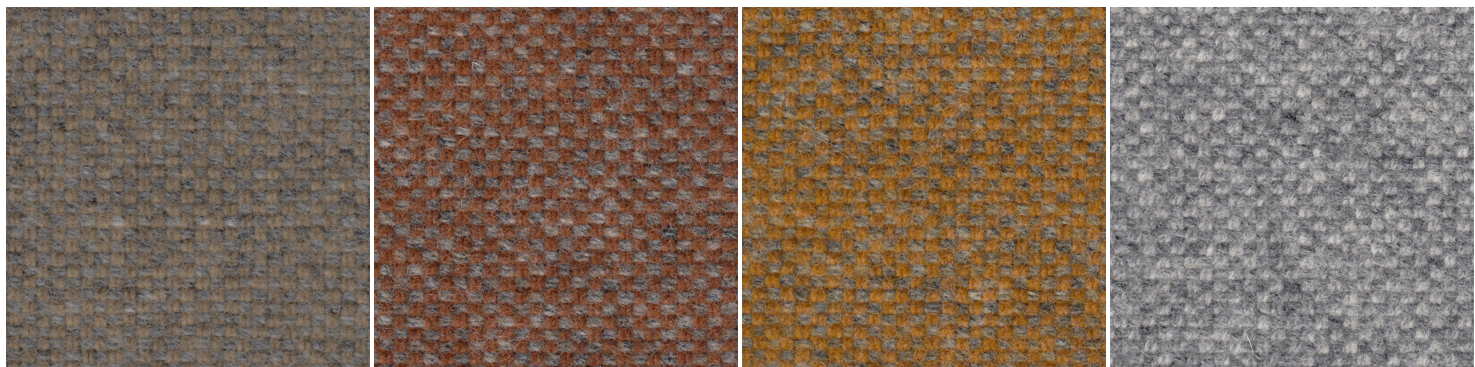
Amdal

With its natural simplicity Amdal shows remarkable durability, comfort and versatility in use. Its 30 colours are subdued and attractive, and enhance the softness and tactility of the fabric. New colours launched 2018

Swatches



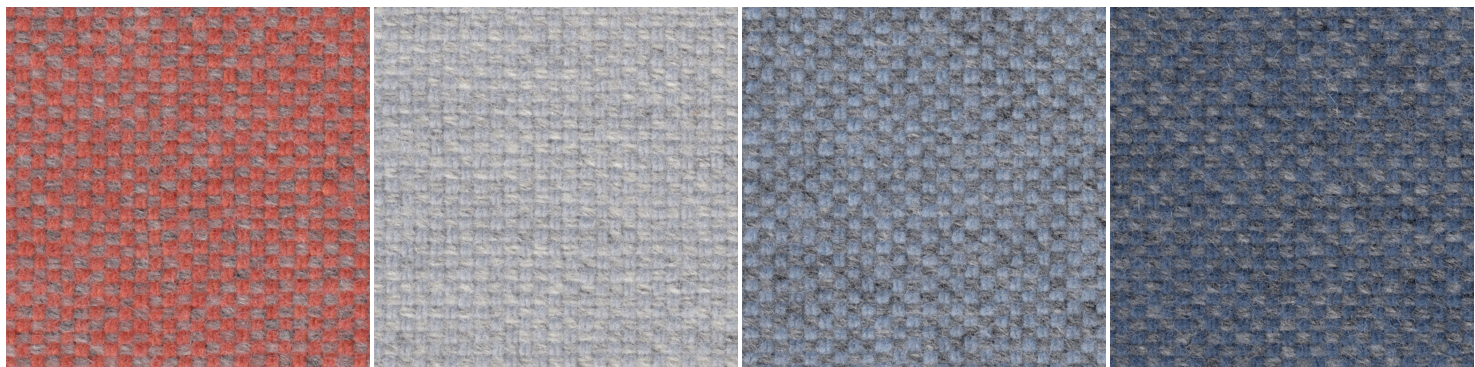
110 122 325 350



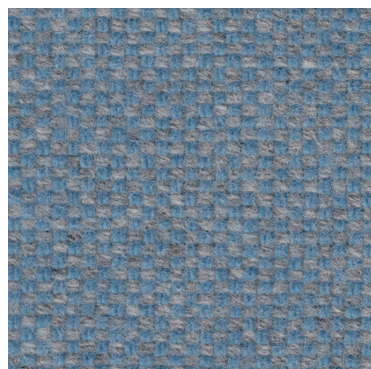
360 580 480 130



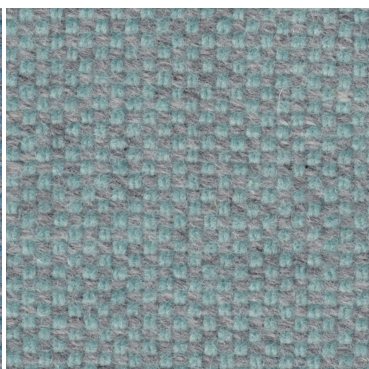
165 365 155 200



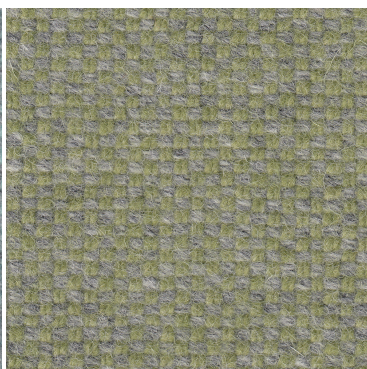
545 125 725 730



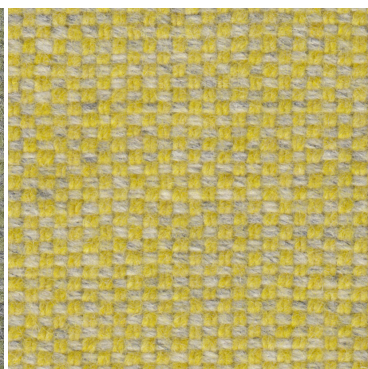
745



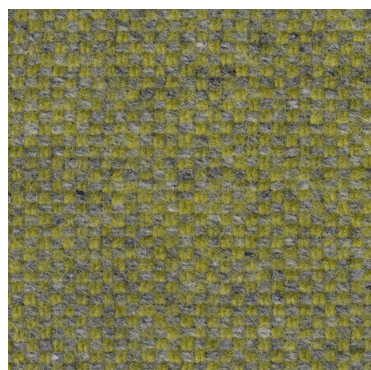
825



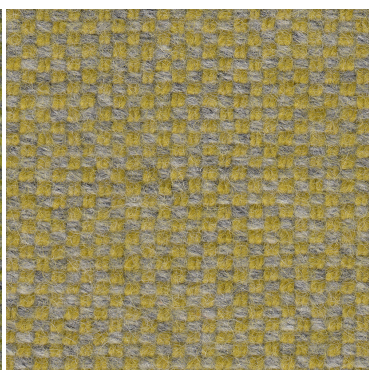
920



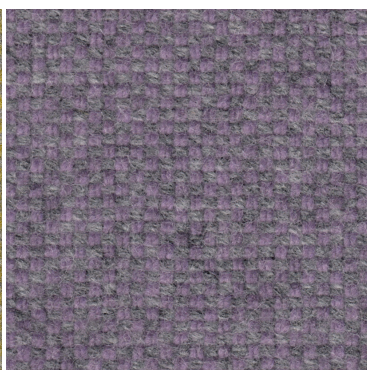
425



935



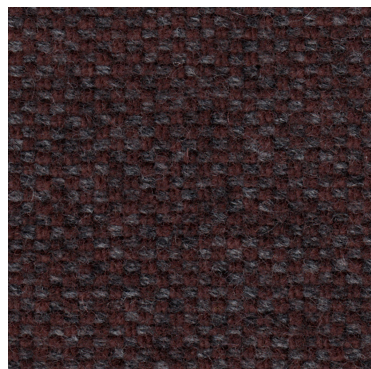
915



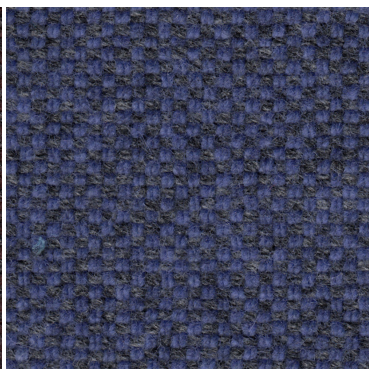
700



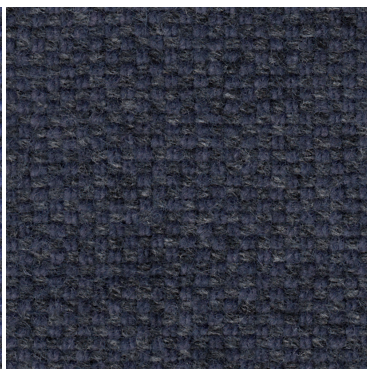
180



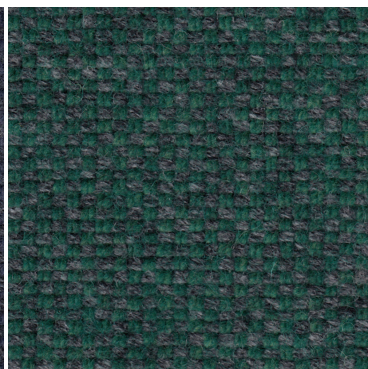
675



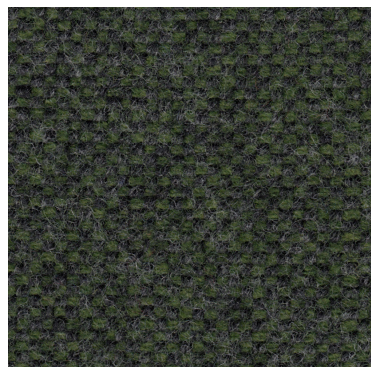
750



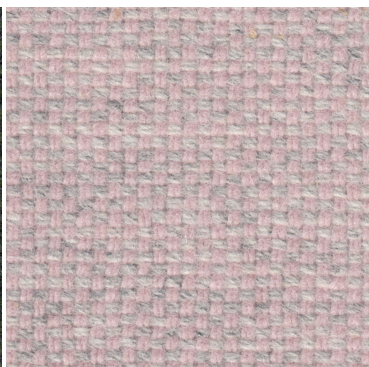
760



885



980



625

Specifications

Flame Resistance	System.String[]
Designer	GU Design Team / Per Bjørnsen
Customs code	NO 51.11.3000
Material	70% Virgin Wool / 30% Viscose
Weight (g/m)	680
Width (cm)	140
Durability (rubs on Martindale)	100000
Fastness to light (Scale 1-8)	5-7
Resistance to rubbing dry state (Scale 1-5)	4
Resistance to rubbing wet state (Scale 1-5)	3-4

Flame Resistance	FTP Code: Part 8 (IMO A652 (16)) EN ISO 1021: Part 1 and 2 BS 5852 part 2 (crib 5) Cal. TB117;2013
Cleaning	Dry cleaning (P)
Wheel Mark	Yes
EU-flower	Yes