

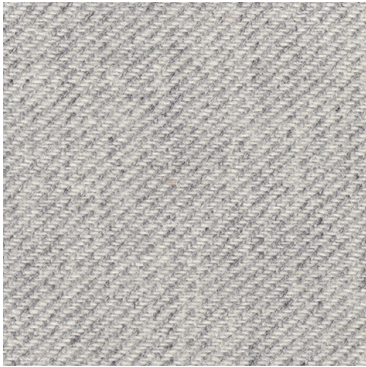


Product code: 5018

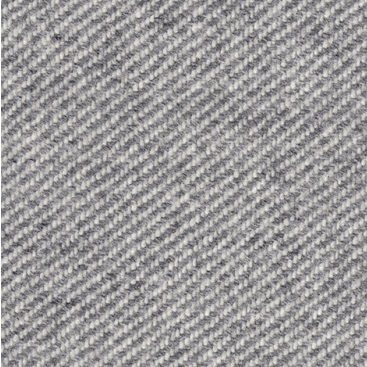
Morgedal

Design: GU Design Team / Kari Skogstad
New colourway: Ragnhild Nordhagen & Christiane Müller

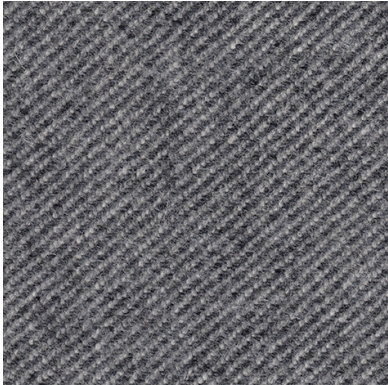
Swatches



110 Marble



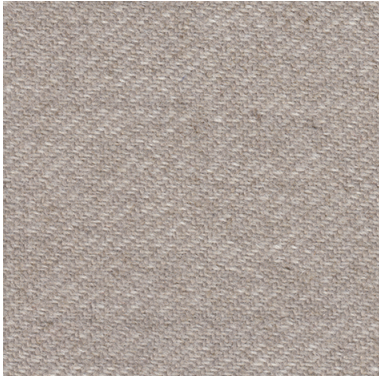
131 Granite



150 Graphite



170 Slate



310 Limestone



350 Dolomite



181 Charcoal

Specifications

Flame Resistance	System.String[]
Designer	GU Design Team / Kari Skogstad New colourway: Ragnhild Nordhagen & Christiane Müller
Customs code	NO 51.11.3000
Material	70% Virgin Wool / 30% Viscose
Weight (g/m)	690
Width (cm)	140
Durability (rubs on Martindale)	90000
Fastness to light (Scale 1-8)	5-7
Resistance to rubbing dry state (Scale 1-5)	4
Resistance to rubbing wet state (Scale 1-5)	3-4

Flame Resistance	FTP Code: Part 8 (IMO A652(16)) EN ISO 1021: Part 1 and 2 BS 5852-2 crib 5 Cal. TB117;2013
Cleaning	Dry cleaning or cleaning with foam detergents
Wheel Mark	Yes
EU-flower	Yes